



**viledon**<sup>®</sup>  
filterCair

## VILEDON FILTERCAIR MODULES

CUSTOMIZED SERVICE PACKAGES FOR YOUR NEEDS

FREUDENBERG  
FILTRATION TECHNOLOGIES

 **FREUDENBERG**  
INNOVATING TOGETHER



## FOR INDIVIDUALIZED MAXIMUM PERFORMANCE

### PROCESS SOLUTIONS THROUGH MODULAR SERVICES

Optimize your processes and save money by relying on the Viledon® filterCair service modules – our tailor-made service packages for your needs.

Efficient and friction-free processes require a precise solution. With the Viledon® filterCair modules, we offer you a comprehensive range of services that can also be individually combined. Viledon® filterCair experts will identify specific optimization potentials and advise you on-site. In addition, we will prepare a customer-specific, audit-relevant measurement report with detailed recommendations for your process.

+

#### Advantages of the Viledon® filterCair service modules

- Comprehensive, problem-specific service packages
- Ability to combine individual service modules
- Status analysis and detailed recommendations for action by our Viledon® filterCair experts
- Comprehensive, interactive and audit-relevant measurement reports
- Individual on-site advice

+

+

+



Comprehensive interactive Viledon® filterCair report



#### Range of services:

- Comprehensive interactive report
- Individual optimization potentials
- Expert on-site advice

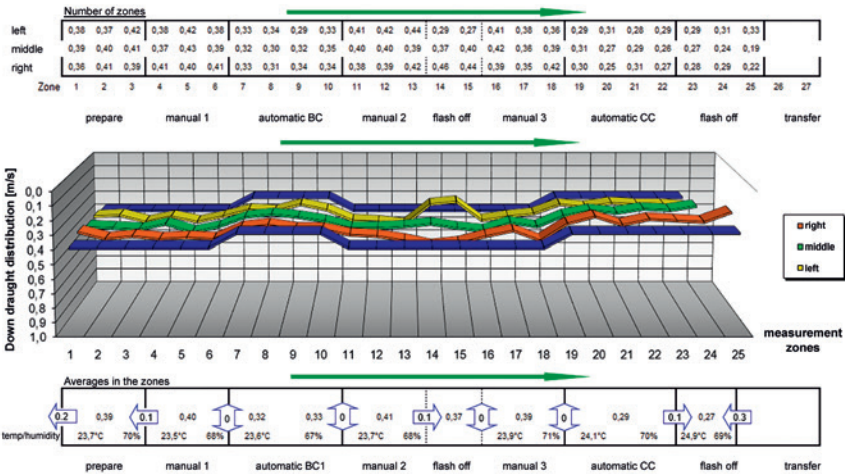


# VILEDON FILTERCAIR

## PROFESSIONAL PROCESS ANALYSIS

Our Viledon® filterCair experts analyze your individual process according to standardized procedures and identify tailor-made optimization potentials for you.

Benefit from our global Viledon® filterCair network and rely on our many years of know-how. We will support you with advice and action.



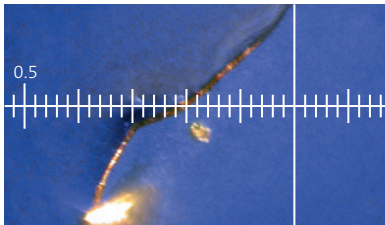
Down draught distribution and booth balancing in a paint line



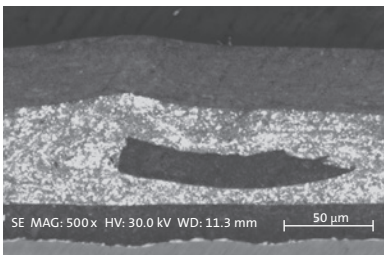
Microscopic defect analysis by Viledon® filterCair experts



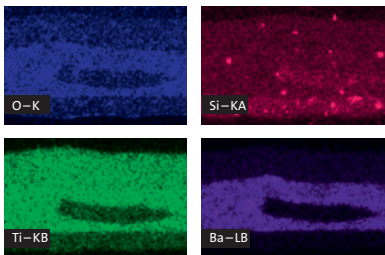
Paint dryer



Cotton fiber in paint under a light microscope



SEM and EDX analysis of a paint inclusion in the primer layer





## MODULE BASIC

### STATUS ANALYSIS PAINT ZONE

Demonstration of quality-relevant contamination in the painting process.

**Scope:**

- Particle measurement with laser particle counter
- Raster measurement of down draughts in a zone
- Determination of booth balance
- Temperature and humidity measurement
- Checking the pressure drop of all relevant filter stages
- Careful filter analysis and evaluation
- Accurate analysis of weak points



## MODULE BASIC + DIRT IN PAINT

### INTENSIVE DIRT ANALYSIS

Process-specific paint damage analysis – root cause analysis of contaminants in the painting process.

**Scope:**

- Includes full range of Module Basic features
- Extensive ProSim particle measurement
- Raster measurement of down draughts in a complete painting line
- Needs-based incident light microscopy
- Problem-specific scanning electronic microscopy (SEM/EDX) or infrared microscopy (FTIR) analysis in the Viledon® laboratory
- Extensive airflow determination of all process-relevant areas
- Local dirt analysis



## MODULE MATERIAL CHECK

### OPERATIONAL MATERIAL ANALYSIS

Testing of fiber/lint released by the materials and clothing used.

**Scope:**

- Application-specific material testing
- Needs-based incident light microscopy
- Lint testing
- Accurate analysis of weak points



## MODULE BASIC + DIRT IN PAINT + MATERIAL CHECK

### INTENSIVE DIRT ANALYSIS INCLUDING EXTENSIVE OPERATIONAL MATERIAL ANALYSIS

Holistic consideration of the painting process – investigation of complex system interrelations between process parameters, materials used and dirt entry. Definition of individual optimization potentials via extensive paint defect analysis.

**Scope:**

- Complete range of services from the modules Basic + Dirt in Paint + Material Check



## MODULE AIR BALANCE

### DETERMINATION OF CABIN BALANCE

Examination and visualization of the flow conditions in the painting plant.

**Scope:**

- Raster measurement of down draughts in a zone
- Temperature and humidity measurement
- Checking the pressure drop of all relevant filter stages
- Airflow determination of all process-relevant areas
- Fog test for the visualization of the flow conditions
- Careful filter analysis and evaluation
- Accurate analysis of weak points



## MODULE COMPRESSED AIR

### COMPRESSED AIR CHECK

Control of process and breathing air systems.

**Scope:**

- Comprehensive compressed air measurement (CO, CO<sub>2</sub>, moisture content, oil content)
- Checking the compressed air quality for contamination
- Detailed optical microscopy of the particles
- Accurate analysis of weak points



## MODULE PAINT OVEN

### TEMPERATURE CURVES IN PAINT DRYERS

Checking the temperature profile in the paint dryer.

**Scope:**

- Thermographic analysis by infrared camera
- Determination of the air balance in the paint dryer
- Detection of object temperatures using temperature data loggers
- Checking the pressure drop of all relevant filter stages
- Careful analysis of HT filters

.....  
Any questions? Simply get in touch:



+49 (0) 6201 80-6264



filtercair@freudenberg-filter.com

We will be pleased to help.

---